

SOURCE | STRENGTH | STYLE



**NIPPONPLY**

— LONG LASTING PLY · SINCE 1994 —

PLYWOOD · VENEER · DOOR · LAMINATE

Veneer  
COLLECTION





## About us

NIPPONPLY derives its name from the Japanese word “Nippon”, which means ‘the rising sun’ in Japanese language. Resonating with the symbolism of the rising sun – the provider of strength, power and life to all the species on earth, NIPPONPLY too makes the furniture sturdy and long lasting.

Nipponply provides world class Plywood, Veneers , Flushdoors and Laminates. We not only make superior quality products available, but we achieve excellence, provide value to the customers through the products and most importantly give unparalleled service.







# Index

Why Veneers?	03
Wood Fact	04
Characteristics of Wood – Burls	05
Characteristics of Wood – Clusters	06
Characteristics of Wood – Pommele	07
Characteristics of Wood – Crotch	08
Type of Figures	09
Matching of Veneers	10
Sizes	11
Types of Veneer Cuts	12
Polishing	13
Natural Veneers	14

## SOLITAIRE

Rough Burls	16 17-18
-------------	-------------

## DIAMOND

Open Grain Exotic Highlighter	20 21-26
----------------------------------	-------------

## CROWN

Redwood	28-29
Bronzewood	30
Smoked	31-33
Dyed	34-35

## PLATINUM

Teak	37-41
Cedar	42
Anegre	43
Beech	44
Oak	45-46
Pine	47
Walnut	48-49
Crotch	50
Pommele	51
Figured	52
Brazilian	53
Wenge	54
Zebrano	55

## GOLD

Engineered Veneers	57-62
--------------------	-------

# Why Veneers?



Wood veneers are growing in popularity with interior designers.

The variety and individual characteristics of natural wood veneers will never be duplicated in another home design since every piece of wood has different characteristics and patterns.

As the material of choice, wood veneer is a design professional's ideal tool in creating exceptional interior elements that are functional, aesthetically pleasing and completely unique.

Using a quality decorative wood to improve the look of a structure is both cost effective and eco-friendly. Enhance a space and do your part for the environment by employing the functionality of exotic wood veneers.



# Wood Fact

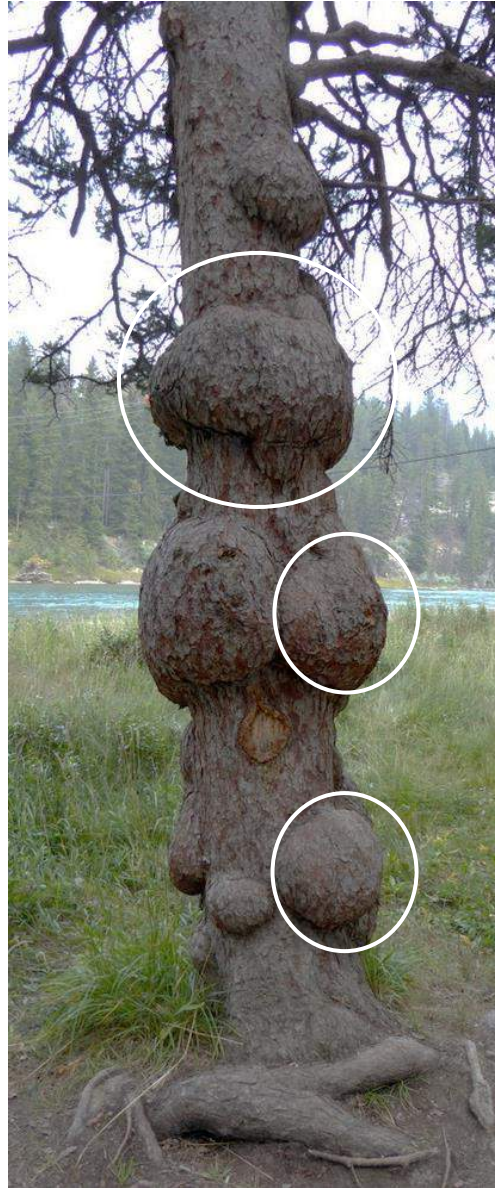


Did you know that cutting of trees can help save the environment?

Everyone knows that trees replenish oxygen in our atmosphere and hence they are essential for our survival. But, this isn't always true. As trees began to age and decay, they start releasing CO<sub>2</sub> into the atmosphere, which is a major contributor to global warming.

To control such situations, Nipponply takes great care in ensuring that the trees are harvested as they mature and before the decaying process sets in. This ensures that there is a huge reduction in the carbon emissions into the environment and also guarantees that the wood harvested is of top quality

# Characteristics Of Wood



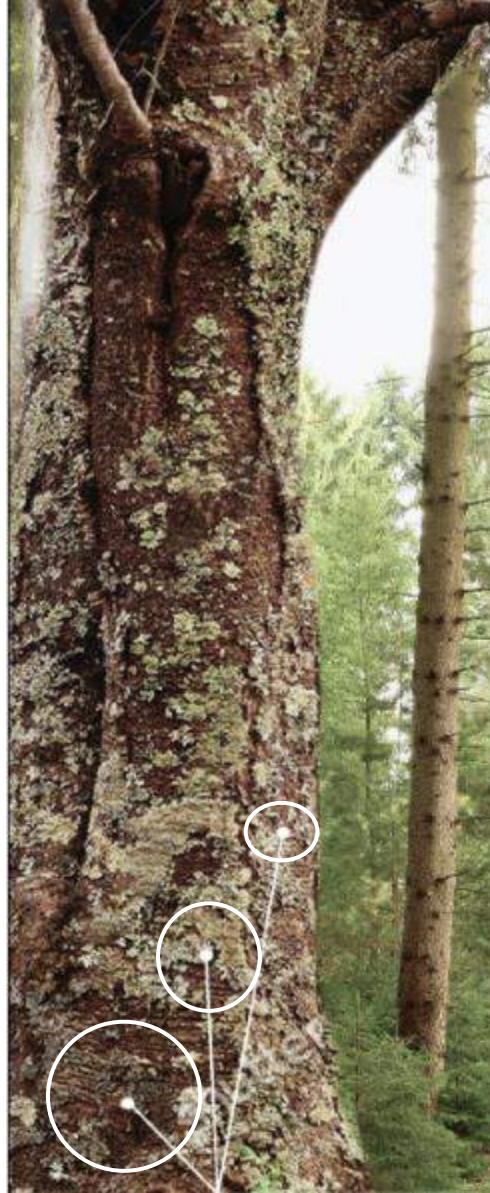
## Burls



A burl is a cool-looking, extraneous growth on a tree. Ugly on the outside, but magnificent on the inside. The swirls, twirls, and eyes dancing in the bark all create a unique, highly figured wood grain that no human could dream of designing. As burls age, their colors and patterns become even richer. One piece of burl wood will never be identical to another.



# Characteristics Of Wood



## Clusters



Clusters are asymmetrical group of speckles reminiscent of their place of origin. These adorn the veneer as tangential quilted figures or soft radial stripes. Their atypical pattern makes them perfectly imperfect to add that verve to your interiors.

# Characteristics Of Wood



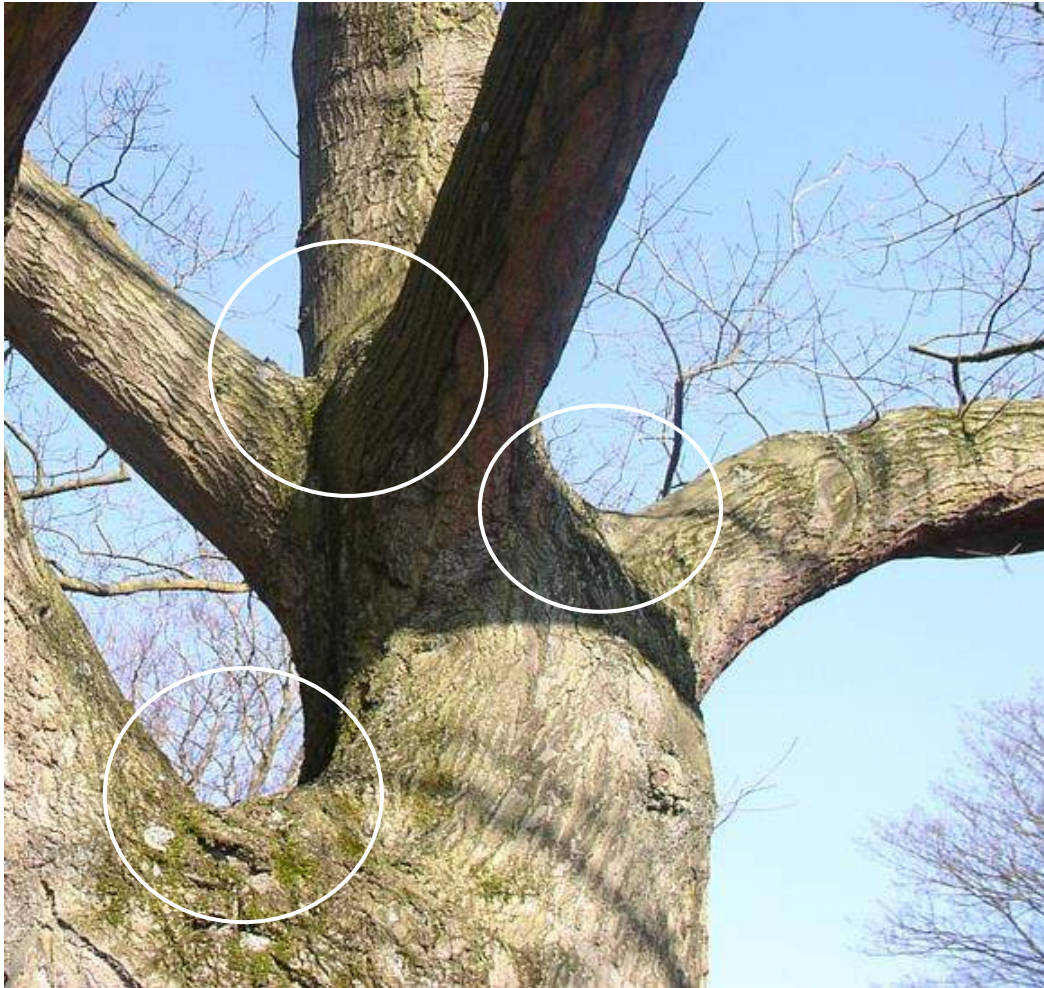
Pommele



The French word Pommele is derived from the word Pomme, translated into English as apple. It is meant to describe the apple shaped effect of the figure. A heavily Pommeled log will show a three dimensional effect of the veneer to create a truly unique and dense pattern..



# Characteristics Of Wood



## Crotch



This "flame" pattern of grain is revealed when a trunk or heavy branch with two forking branches is cut through its collective center. It is highly prized veneer cut from just below the fork of a tree. It always produces a highly figured V-grain of an extremely decorative character.



# Types of Figures



Stripe Grain



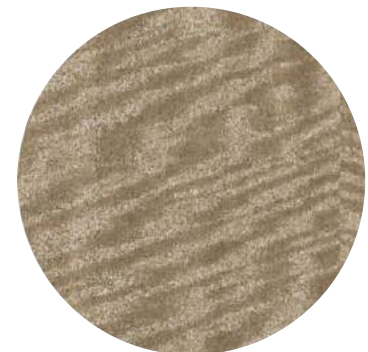
Cathedral



Half-Cathedral



Fiddle Black



Mottled



Pommele



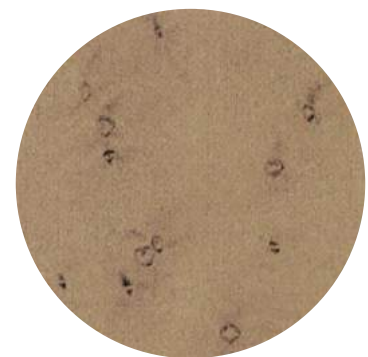
Burls



Cluster



Crotch



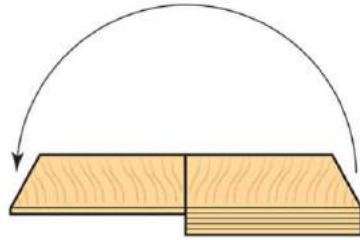
Bird's Eye



# Matching of Veneers

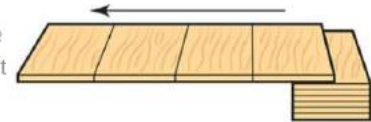
## BOOK MATCHING

This traditional method of matching is achieved by taking successive leaves of veneer and reversing alternate leaves so as to bring corresponding opposite edges together in a mirrored effect. This produces a symmetrical balanced pattern of grain and figure.



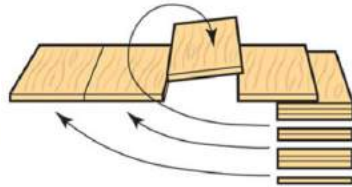
## SLIP MATCHING

Successive leaves are taken from the same stock or flitch of veneer and jointed without turning alternate leaves over as in book matching. This produces a repeat pattern which varies gradually across the panel. This method is usually most effective when straight grain veneers are used.



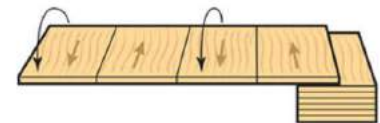
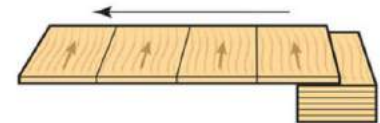
## MISMATCHING

Leaves from one log are deliberately mixed (and may be turned over) to give a random planking effect whilst maintaining an overall consistent grain and colour. This may be used, for example, in demountable partitioning schemes where future relocation is likely



## SLIP AND TURN MATCHING

Similar to standard slip matching, but alternate leaves are turned so that the grain runs in the opposite direction.





# Sizes



3ft. X 7ft.



4ft. X 8ft.



4ft. X 10ft.



# Types of Veneer Cuts



Half Rotary Cut



Quarter Cut



Crown Cut



Rift Cut



Polish/finish is necessary for protecting the wood surface and enhancing its beauty. Clear finishes are applied to veneers to retain the natural look of the wood and to highlight its grains.



### Water-based Coating

- Eco-friendly
- Good coverage
- Very good sandability
- Ease of application and dries faster
- Can be applied with Brush, Spray and Roller

# Polishing

### PU Polish

- Can be used for interior & external applications
- Gives better protection to the veneer
- Has higher water resistance
- Available in Gloss and Matte finish
- Apply with Spray On

### Acrylic Polish

- Best suited for internal use
- Premium wood finishing solution
- Only available in Gloss finish
- Recommended for horizontal surfaces
- Apply with Spray On

### UV Polish

- Best suited for internal use
- Premium wood finishing solution
- Only available in Gloss finish
- Recommended for horizontal surfaces
- Apply with Spray On

### Melamine Polish

- Ease of Application
- Can be used for interior & external applications
- Available in Gloss and Matte Finish
- Can be used with Roller or Brush



## Natural Veneers

Nipponply's vast array of more than 200 different types of veneers, provide a very natural, intricate, rich and beautiful aesthetic to your space.





*Solitaire*

SMOKED OAK



*Rough*

Add the rustic look of rough sawn lumber to your next veneer project! The rough cut effect is created by slicing the veneers with a blade that has imperfections in the cutting edge. Each sheet contains multiple random-width veneers laid side by side for an authentic plank appearance.

LARCH



OAK CROWN

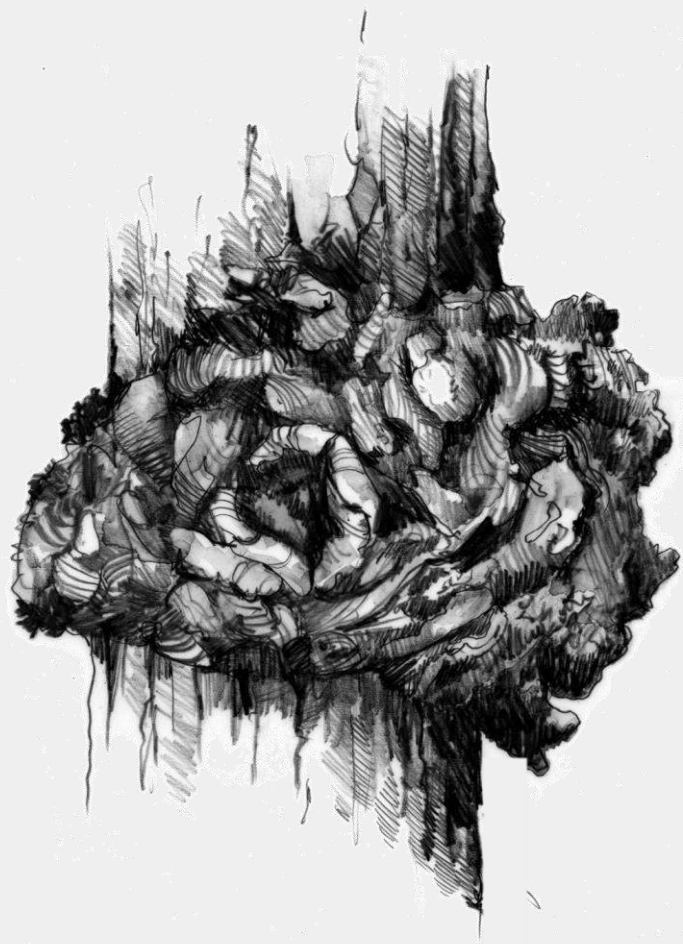


TEAK

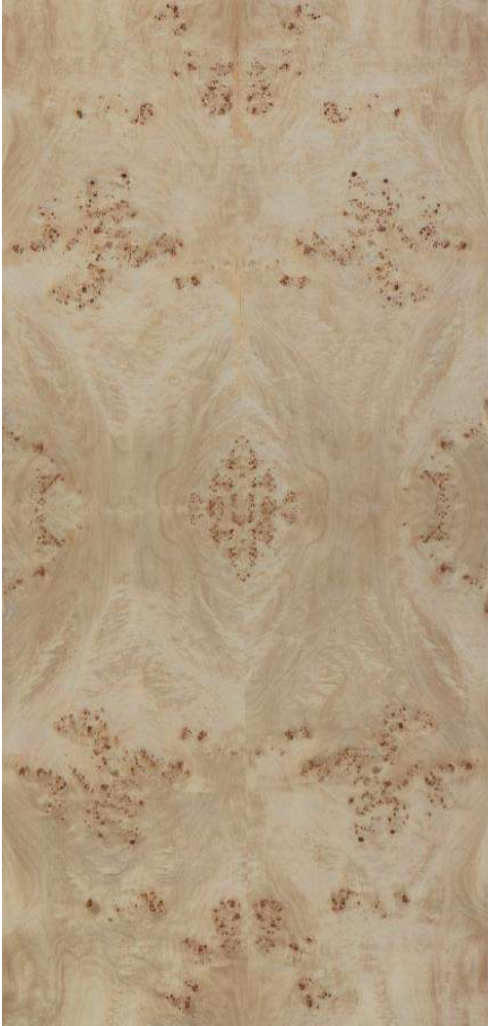




# Burls



MAPA



MADRONA



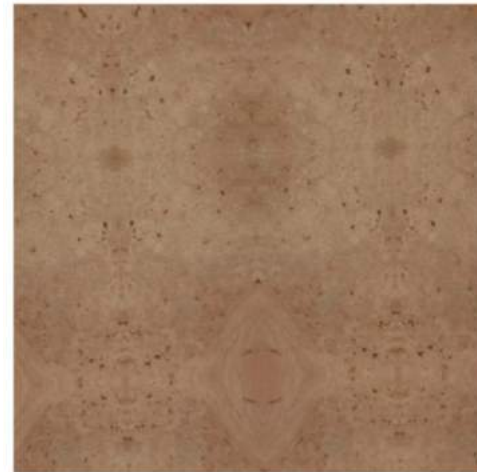
WALNUT



VAVONA



MAPLE







*Diamond*

# Open Grain

In such veneers natural grains of the veneer are opened up to allow greater feel factor of the wood.



# Exotic Highlighter



EBONY



ZIRICOTE



In contrast to standard veneers, the availability of specialty and exotic veneers is limited by nature. This provides great opportunity to create truly distinctive designs featuring the natural beauty, colors and patterns of these rare materials.

# Exotic Highlighter

ZEBRANO



FIGURED CURUPIXA



WHITE EBONY



AFRICAN EBONY





# Exotic Highlighter

LIVE TREE WALNUT



FADED GREEN



CORAL



BLACK OLIVE



# Exotic Highlighter

FADED SMOKE



PALISANDER STONE



POMELLE STONE



METALLIC LIVE TREE





# Exotic Highlighter

BUSH



CRACK TEAK



CRACK WALNUT



LIVE TREE TEAK



# Exotic Highlighter

KNOTTY MADRONA



ORGANIC MAPLE







# Redwood

Among the largest and tallest trees on earth, the redwood produces a rich, warm, inviting veneer that's as impressive as the tree. Uniformly deep reddish-brown, the grain in quarter cut veneer is beautifully striped or figured by fine markings. Burled veneer (also known as vavona burl) is sliced from huge, prolific burl growths found on occasional redwoods, producing some of the largest and most uniform burled veneer in the world.





MAKORE



SAPELE QUARTER



SAPELE CROWN



MOABI

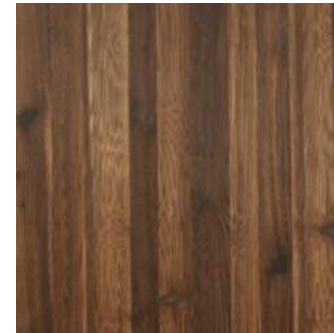




# Bronzewood

Bronzewood is an exceptionally straight-grained veneer with a reddish-brown heartwood and thin, yellow-white sapwood. This tall, straight tree grows to exceptional heights, producing long lengths of clear veneer, primarily from the heartwood of the tree.

SMOKE LARCH



LARCH



KNOTTY PINE





Stained dark colored Veneers are very in vogue these days. The process used turns light colored veneers to warm rich chocolate browns. Very few kinds of wood can be processed in this fashion as there is a definite level of tannic acid required. This tannic acid reacts with the fuming ammonia to produce the dark hues of brown. The colour that the fumed wood takes on due to the fumigation process is to a large degree non-aging and is far more stable to light compared to many other coloured wood types. The fumed wood veneer is also more elastic and less brittle.

SAPELE



MAKORE



KNOTTY OAK



MAPLE



LARCH



ASH



SAPELE CROWN



EUCALYPTUS





OAK



CEDAR



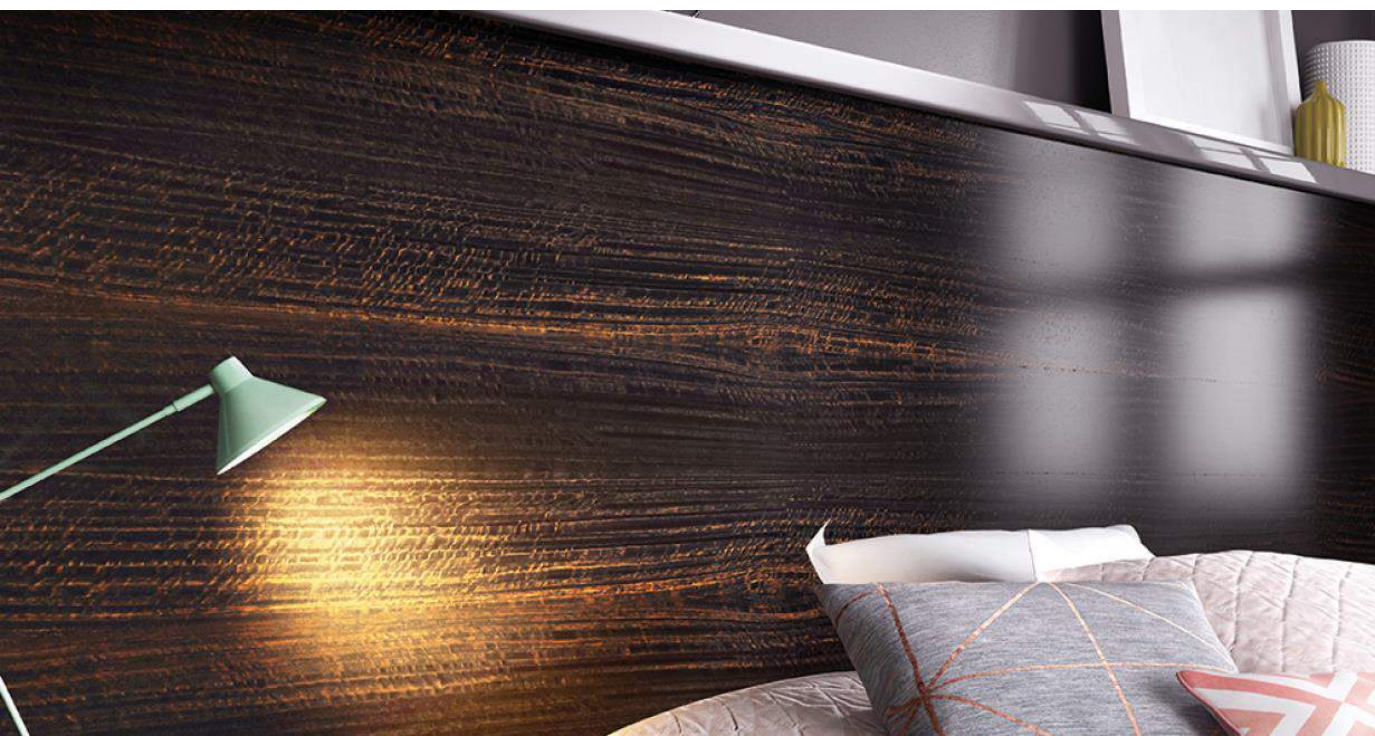
MAKORE



GOLDEN MAPLE



CHESTNUT





ARMANI



FIGURED SUCUPIRA



*Dyed*

These veneers are manufactured via a four-stage industrial process, composed of bleaching, dyeing, drying and pressing. The sheets are immersed in the dye so that it fully penetrates the veneer, resulting in a uniform tone and an enhanced natural grain. Our dyed veneers are widely used in furniture and interior design projects



SUCUPIRA



KOTO GREY

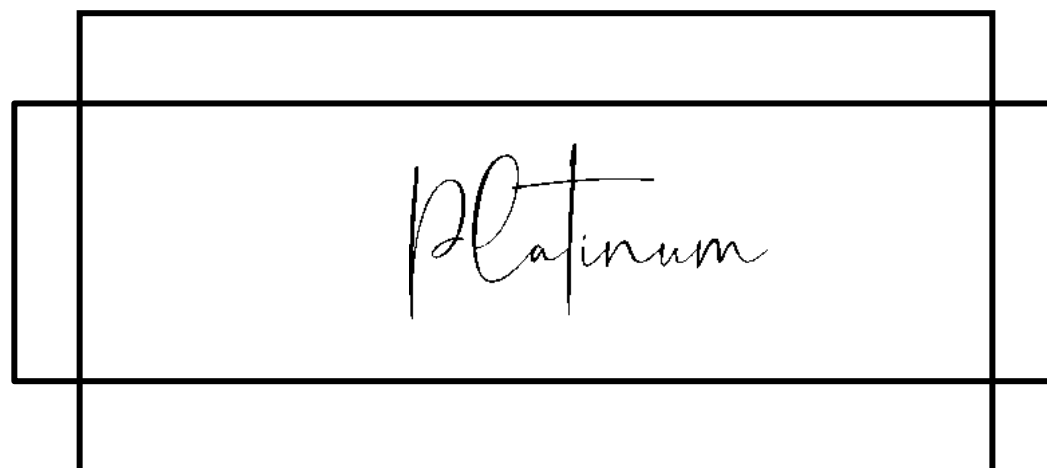


ASH



OAK GREY







# Teak

Teak veneer is typically a golden honey brown to a deep brown color that darkens with age. Teak is a dense and oily hardwood that is relatively easy to work with and strong. It is best finished with a wipe on oil. It is heavy, with a uniform coarse texture and medium porous grain.



Teak Dark Grain



# Quarter Teak

Teak Dark Grain



Teak Grain less



Teak Quarter





Semi Crown Teak



Figured Teak



Smoke Teak



Grain less Teak



Smoked Crown Teak



Crown Teak





BOOK MATCH CROWN TEAK



Teak



MISMATCH CROWN TEAK



# Cedar

Cedar veneers tend to be knotty and narrow because this is a very slow-growing species, and most trees harvested tend to be fairly small in diameter. The wood is soft with a fine, even texture. Very knotty with distinctive cedar aroma. Soft, easy to work but knots may present some difficulties. Easy to finish.



RED



GOLDEN



AFRICAN TULIP



KOTO





# Anegre

Anegre Veneers are Light tan, sometimes creamy, occasionally light pink. Grain texture smooth, with occasional light silica inclusions. Figure ranges from unfigured to highly figured, often with a pronounced fiddleback.



# Beech

Beech veneer is a pale pink to a creamy reddish light brown color. This veneer is also commonly called steamed beech or European beech. It is strong, with a fine silky texture and tight uniform grain. Beech includes small silvery pith rays, giving the wood a slightly lustrous sheen.



WHITE



STEAM



# Oak

Oak veneer is typically a straw colored light tan-brown to a creamy beige light wheat color to a pink tone. Both red oak and white oak are common American hardwoods that are easy to work with and strong. Oak has a medium to coarse texture and an alternating tight to porous grain.



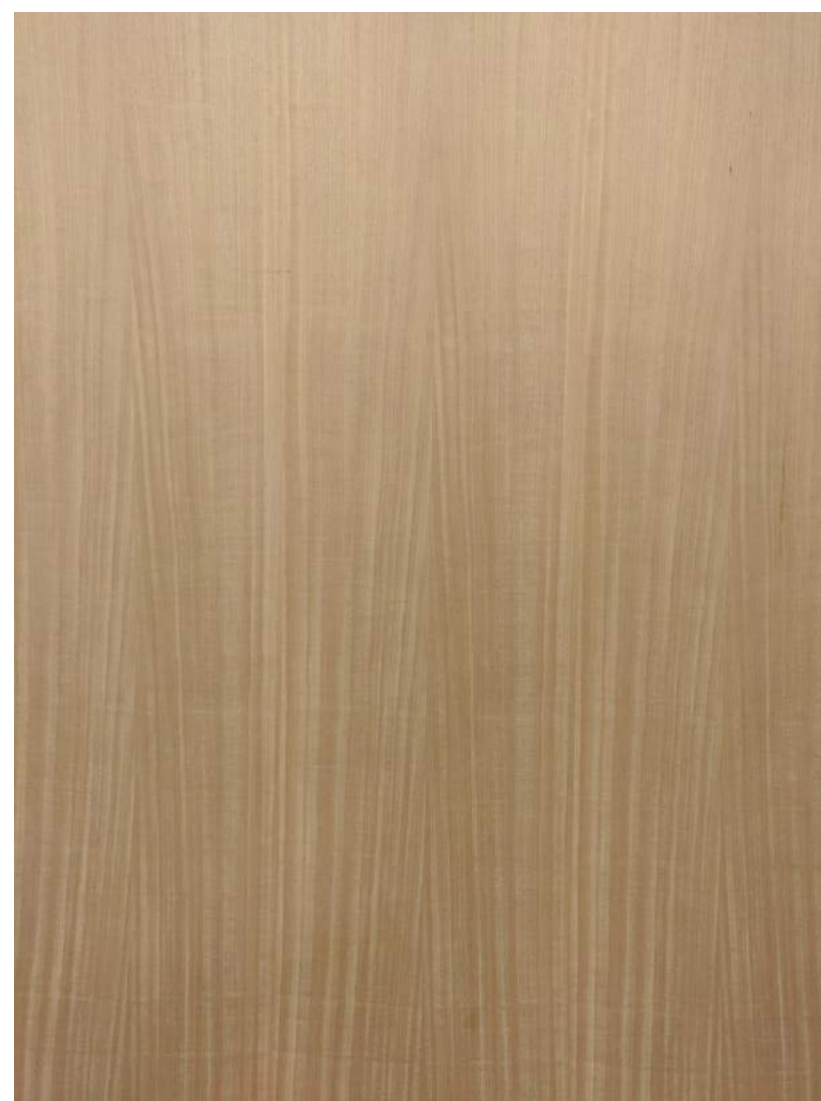
RED



WHITE



FIGURED RED



CROWN



KNOTTY





# Pine

Knotty Pine Wood Veneer is an American classic, an unmistakable wood like no other. Its appeal for wood craftsmen comes from its rustic charm when used for furniture and wall panels. The knotty look allows for a great rustic feel.



METALLIC



KNOTTY







# Walnut

Walnut veneer is light grayish brown to chocolate brown in color. It has a fine to moderately coarse texture, medium porous to uniform grain, and finishes nicely with stain or natural clear coat to preserve the warmth and color. Walnut is a hardwood of medium density, very easy to work with and strong.



PARQUET



FIGURED



AMERICAN CROWN



AMERICAN QUARTER





Crotch

MAHOGANY





Pommele



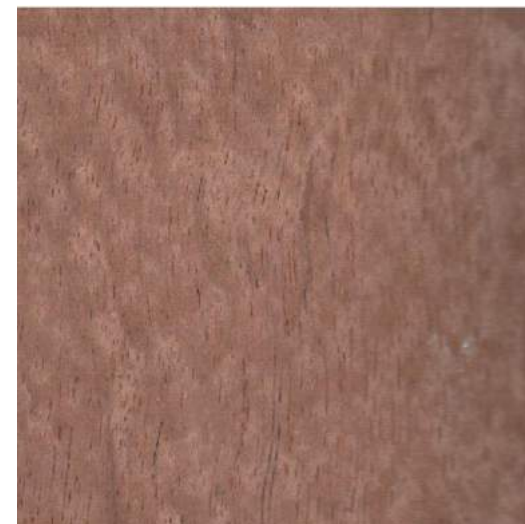
SAPELE



EUCALYPTUS



BUBINGA



# Figured



Figure is the surface effect of grain and color patterns produced by the natural patterns of growth or biological "defects" in the tree. Not all species produce figured wood, and the effects vary from log to log.

ASH



SYCAMORE



ANEGRE





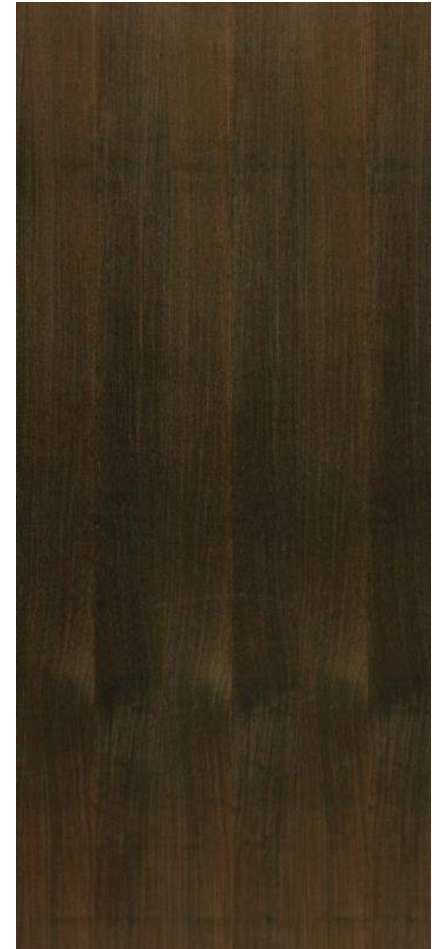
# Brazilian



One of our more popular imported woods. Hard, very heavy, and very tough. The grain is commonly interlocked with a medium coarse texture. Somewhat difficult to work due to its hardness and weight.



SUCUPIRA



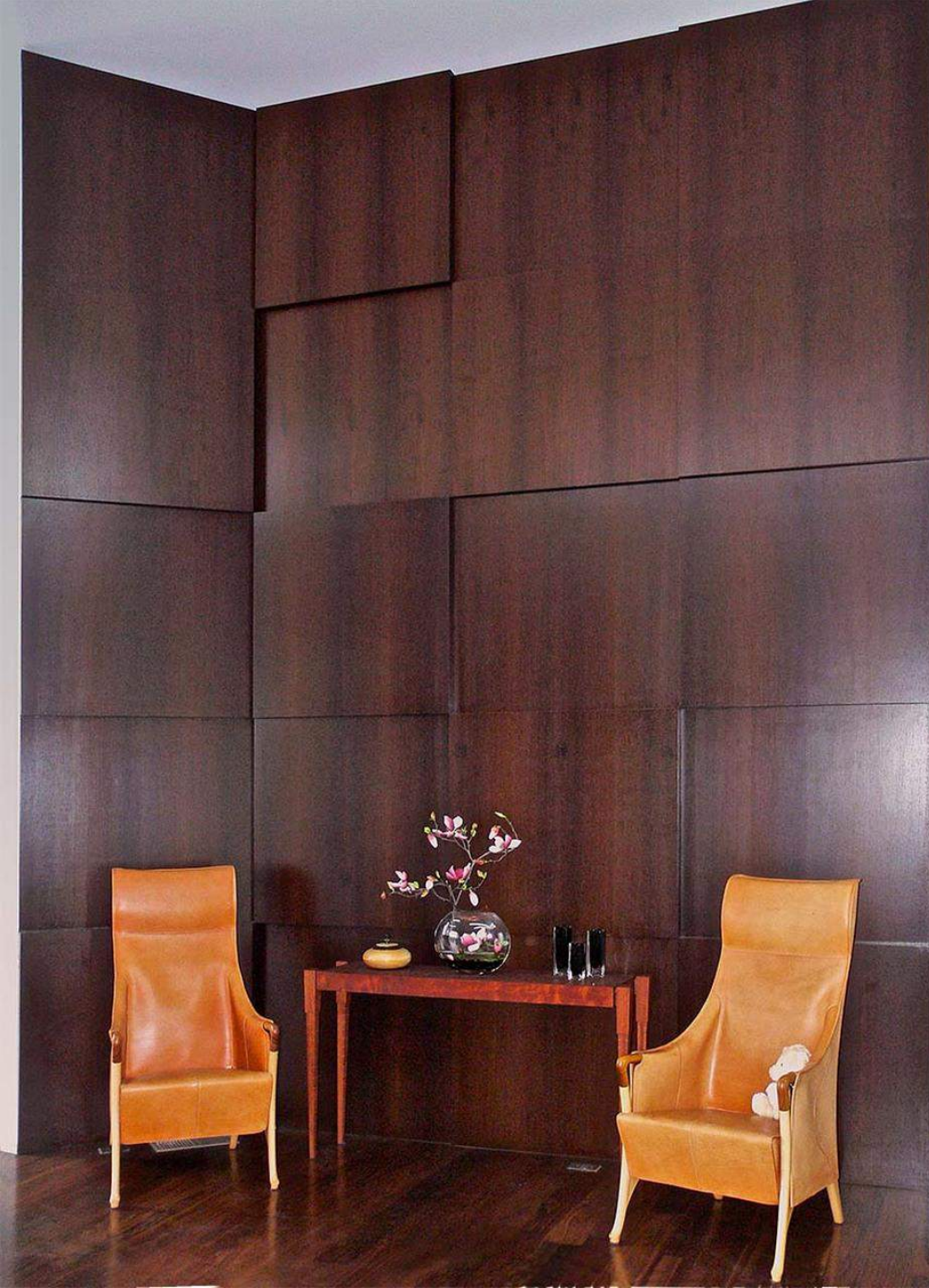
IPE

# Wenge

Wenge veneer is naturally dark brown. The deep color of the wood adds dramatic effect by itself or a bold contrast with other woods. Wenge is a West African hardwood that is very dense, hard and heavy with a coarse texture and a porous grain. It accept finishes well but care should be taken to remove all sanding dust from the pores.. Straight grained with a coarse texture and matte finish, Wenge produces large leaves well suited for architectural use. This extraordinary wood lends an elegant and exotic appeal to the build environment.

**FIGURED**

**QUARTER**








*Zebbrano*



The species as the name suggests has an attractive linear pattern like that of a zebra's skin. Mainly quarter sliced which gives a light and dark lined grain. Zebbrano can be quite a striking feature veneer when used with other plainer veneers and will always finish well.



Gold



# Engineered Veneers



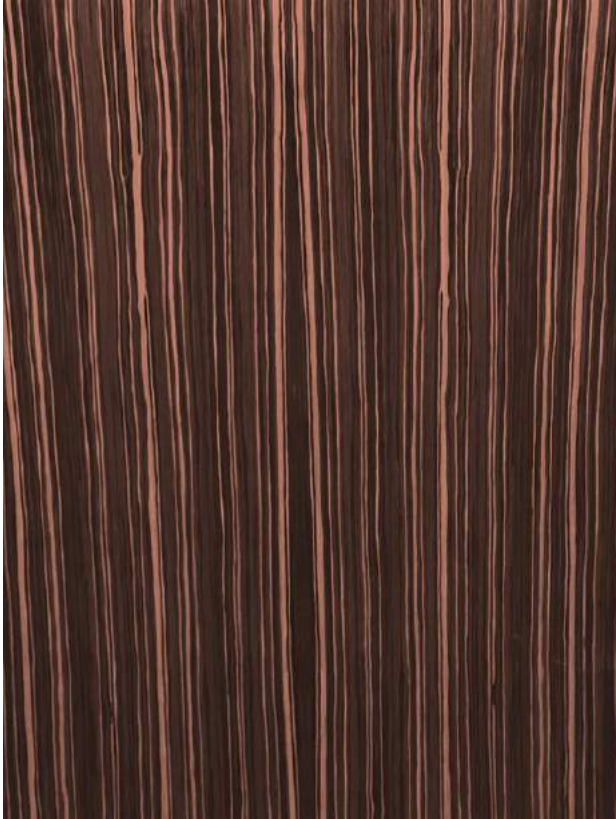
AERO



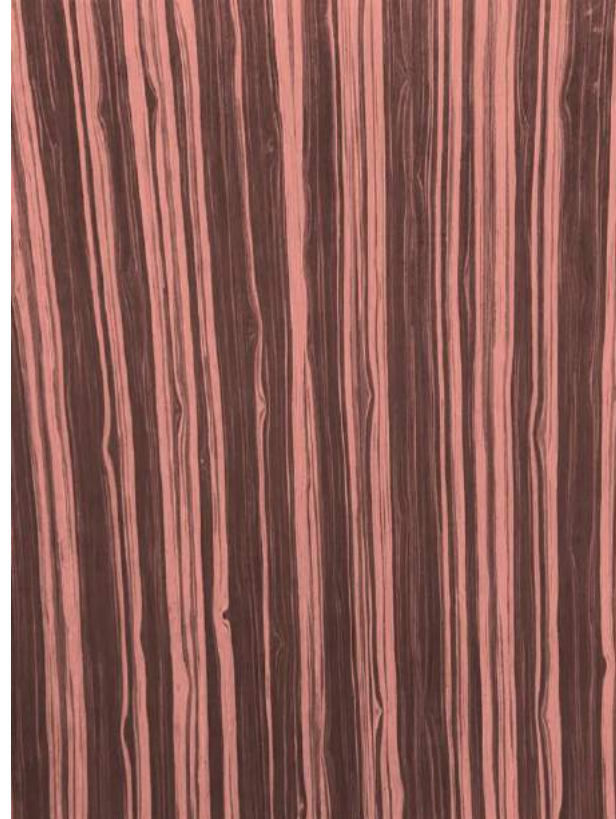
Engineered Wood veneers are also known as reconstituted, recomposed, man-made or manufactured veneers. As its name implies, however, engineered wood veneer is a re-manufactured product processed to achieve a pre-designed appearance.

# *Engineered Veneers*

EBONY QUARTER



EBONY FIGURED





# Engineered Veneers

SNAKE



ZIRICOTE



HAZELNUT





# Engineered Veneers

EMERALD



LANDSCAPE



MOSIAC





# Engineered Veneers

LOURO PETRO - VERTICAL/ HORIZONTAL



ELM



# Engineered Veneers

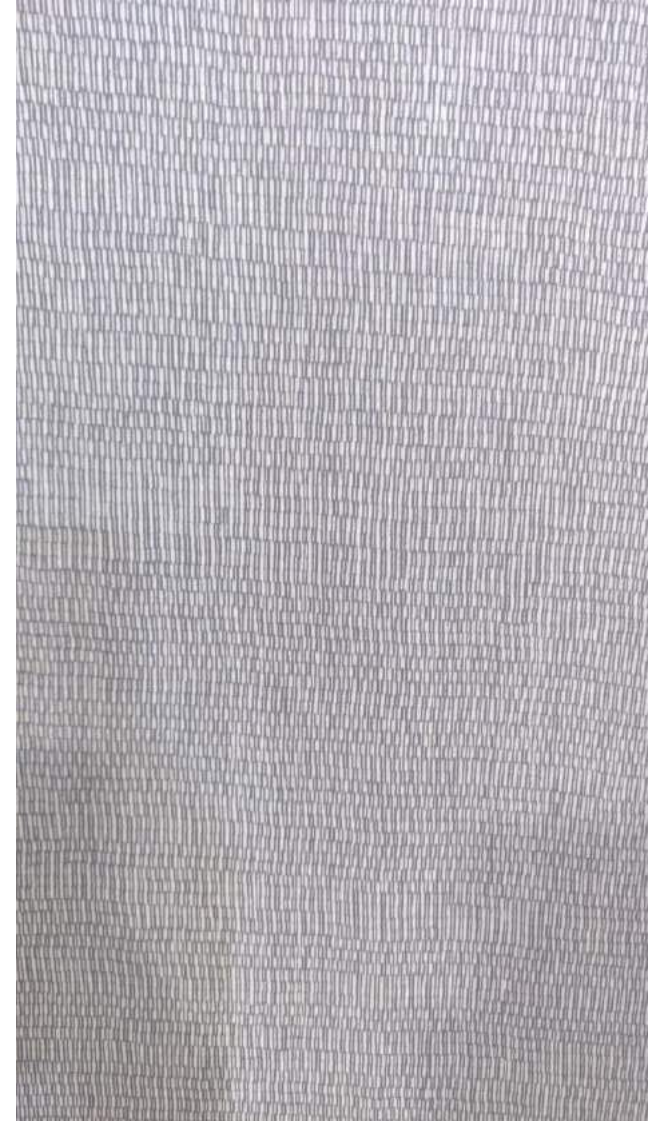
TAMO



STYRO



CASABLANCA





Product Offer		Units	Values/Compliance
1	Length	mm	2150, 2440 & 3050
2	Width	mm	915 & 1220
3	Thickness	mm	4 mm & above
4	Veneer Face	mm	0.5 mm minimum
5	Backing Variants		
	Plywood (Gurjan/MHW)		4
	MDF		6 - 25
	Kraft		1.5
	Flex Backing		0.5
6	Product Density		
	Plywood (Gurjan/MHW)		620
	MDF	Kgs/Cubic Meters	680
	Kraft	Typical Values	1250
	Flex Backing		550
7	Surface Texture	Products are made available in different textures and hence may vary and provide a unique look.	
	Natural		
	Saw Cut		
	Special Texture		
8	Colors Available	Over 200 species of veneers and color styles, available in natural as well as engineered versions to suit your needs.	
	Natural		
	Dyed		
	Smoked		
9	Cuts Available	Available in all types of cuts providing you with ample of options to suit your style.	
	Crown Cut		
	Quarter Cut		
	Rift Cut		
	Rotary Cut		
10	Veneer Matching	We provide different styles of matching to match your requirements and provide the best aesthetical value to your project.	
	Book Matching		
	Mix Matching		
	Slip Matching		
	Reverse Slip Matching		
11	Borer & Termite Resistance	Product exhibited a defined resistance.	

# Technical Specifications

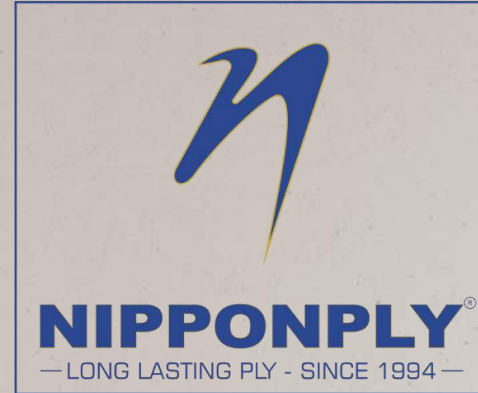
Performance Properties		Specified Value as per IS 1328:1996	Nipponply Results
1	Thickness (mm)		
	a) less than 6.0 mm	± 10%	Complies
	b) above 6.0 mm	± 5%	Complies
2	Squareness (mm)	2 mm per 1000 mm	1.5
3	Edge Straightness (mm)	2 mm per 1000 mm	1.2
4	Moisture Content	5 - 15%	7 - 9%
5	Water Resistance	Shall not show delamination	Complies

## Technical & Emissions Characteristics

12	Bonding Adhesive	Urea Formaldehyde
13	Emissions	Conforms to E1 of EN 717-1
14	Bonding Strength of Adhesive	Conforms to ANSI
15	Resistance to Color Change	Changes owing to nature of wood is observed due to lapse of time and exposure to light
16	Abrasion Cycles	1000 cycles (ASTM D 4060 S32)



SOURCE | STRENGTH | STYLE



PLYWOOD - VENEER - DOOR - LAMINATE



### CORPORATE OFFICE

B-101 Westgate, Near YMCA, S.G.Highway, Ahmedabad 380015, Gujarat

### SHOWROOM

202, Second Floor, Shivalik Arcade, 100 Feet Ring Road, Above HDFC Bank,  
Near Prahladnagar Garden, Prahladnagar, Ahmedabad - 380015

[www.nipponply.com](http://www.nipponply.com) | [info@nipponply.com](mailto:info@nipponply.com) | +91 9712995099



Nipponply



Nippon Distributors Pvt. Ltd